

User Story: IPOS Kidney – Eligibility Criteria

Table of Contents

- Description:..... 2
- As-Is Functionality: 2
 - HSP Eligible..... 2
 - More Information Dialog 2
- To-Be Functionality:..... 3
 - HSP Eligible..... 3
 - More Information Dialog 4
 - Feature Switch..... 4
 - Audit 4
 - Data Conversion 4
 - Eligibility Decision Diagram..... 5
 - Additional Details 6
 - Translation 6

User Story: IPOS Kidney – Eligibility Criteria

Description:

The **HSP Eligibility** criteria for a recipient seeking participation in the DWL Kidney Allocation is changing.

As-Is Functionality:

HSP Eligible

Eligible for HSP Allocation must be set to Yes when all of the following is true:

1. Recipient organ request state for kidney = 'active'
2. **Cumulative Kidney cPRA value is greater than or equal to cPRA limit for kidney**
3. Recipient ABO <> (unknown or null)
4. User defined recipient antibodies confirmed = yes
5. HLA Typing Complete for Kidney = yes
6. **Patient on dialysis = yes**
7. Recipient organ request Program = Deceased Waitlist

HSP Kidney Eligibility must be re-calculated whenever any of the criteria change.

More Information Dialog

ORGAN = KIDNEY | PROGRAM = DECEASED WAITLIST

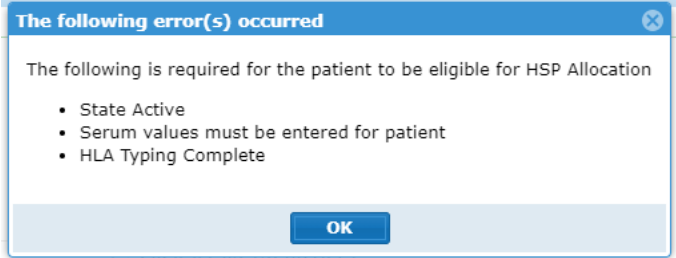
Eligible for HSP allocation must include a hyperlink entitled 'More Information' which is clickable

Upon selection the 'More Information' will open a separate dialogue with a list of all missing data elements required for eligibility to HSP allocation. (see FR 1.29.340)

Dialogue must have header of:

"The following is required for the patient to be eligible for HSP Allocation"

Dialogue must include close button in the bottom right



User Story: IPOS Kidney – Eligibility Criteria

To-Be Functionality:

HSP Eligible

Eligibility for HSP Allocation must be set to Yes when the following conditions are true:

1. Recipient has a Kidney organ request with a State of **Active**
2. Recipient’s Program for the Active Kidney organ request is **Deceased Waitlist**
3. Recipient’s ABO is defined and not set to **Unknown**
4. Recipient’s HLA Serum results are **Confirmed**
5. Recipient’s HLA Typing results are **Complete** as per the DWL Kidney configuration

Plus, one of the following groups of criteria:

Group A:

- Recipient is Paediatric, as defined by the Deceased Waitlist / Kidney configuration

OR

Group B:

- Recipient is On Dialysis
- Recipient’s Cumulative Kidney cPRA is greater than or equal to the cPRA Cut-Off defined by the Deceased Waitlist / Kidney configuration

OR

Group C:

- Recipient is Pre-Emptive
- Recipient is not Paediatric, as defined by the Deceased Waitlist / Kidney configuration
- Recipient’s Cumulative Kidney cPRA is greater than or equal to the Pre-Emptive cPRA Cut-Off defined for the Deceased Waitlist / Kidney configuration

HSP Kidney Eligibility must be re-calculated whenever there are any changes to the data associated to the criteria, in any of the groups.

User Story: IPOS Kidney – Eligibility Criteria

More Information Dialog

- Completely dynamic:
 - Values (e.g. cPRA) displayed based on configuration
 - Criteria grouping only displayed if not met

The following is required for the patient to be eligible for HSP Allocation:

[APPLICABLE TO: Group A, Group B or Group C]

- State Active
- ABO must be A, B, AB, or O
- Serum values must be entered for patient
- HLA Serum must be confirmed
- HLA Typing Complete

[APPLICABLE TO: Group B – if Recipient is On Dialysis and not Paediatric]

- cPRA must be greater than or equal to {cPRA Cut-Off}

[APPLICABLE TO: Group C – if Recipient is Pre-Emptive and not Paediatric]

- cPRA must be greater than or equal to {Pre-Emptive cPRA Cut-Off}

[APPLICABLE TO: Not Paediatric and not On Dialysis and not Pre-Emptive]

- Patient must be On Dialysis or Pre-Emptive

Feature Switch

To support enabling or disabling the updated HSP Kidney eligibility criteria, the application will provide the ability to disable the updated functionality and revert to the existing criteria evaluation functionality.

- When the updated HSP Kidney eligibility criteria functionality is disabled, the application will:
 - Ensure all eligible recipients are On Dialysis
 - Not automatically granting eligibility to paediatric patients
 - Not granting eligibility to pre-emptive patients

Any new fields (e.g. Patient is Pre-Emptive) will not be removed from the application when the new functionality is disabled, and the validation between the On Dialysis and Pre-Emptive fields will continue to function as designed.

Audit

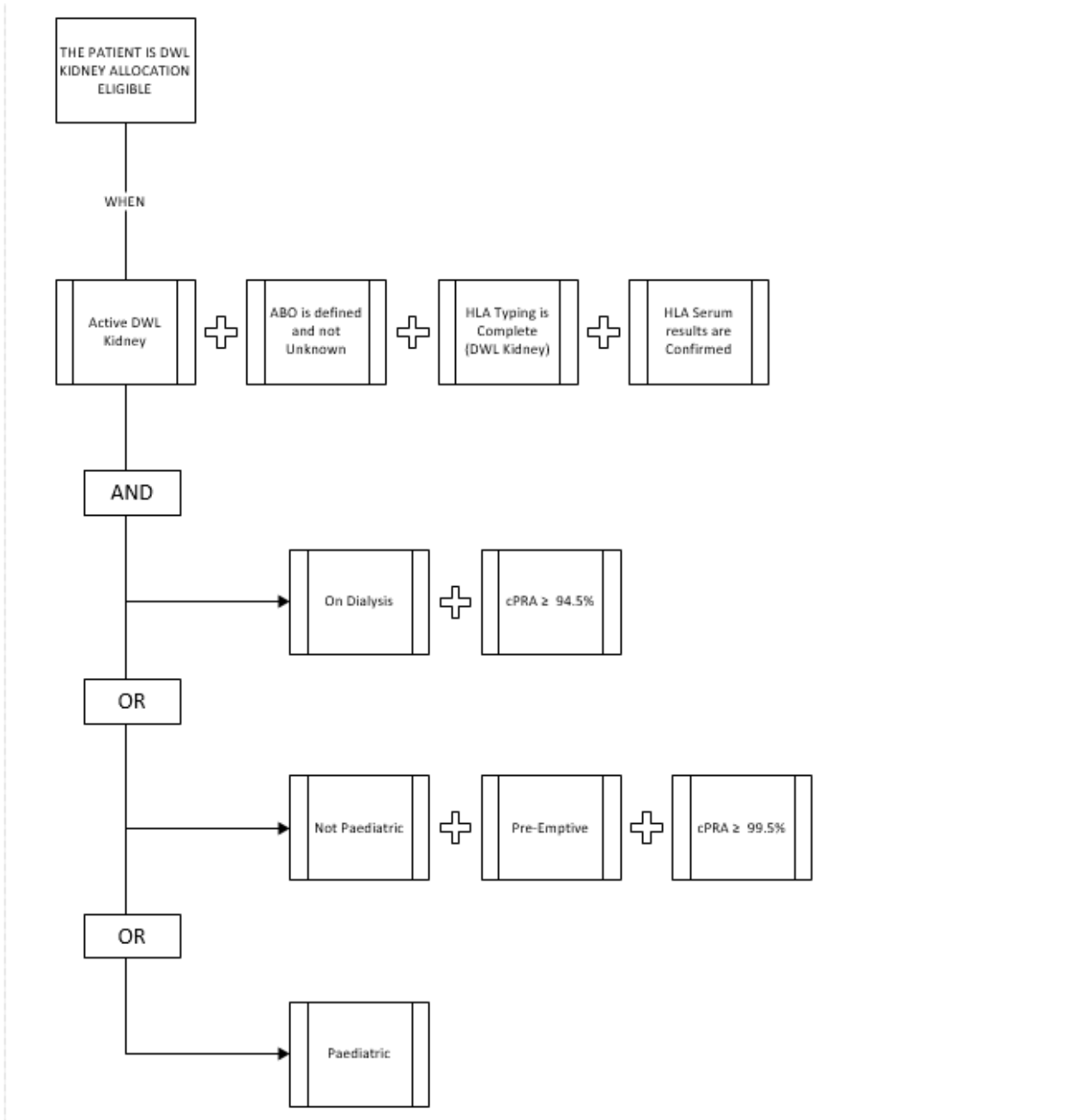
There is no change to the audit functionality. Data changes that trigger an update to eligibility will continue to be handled as they are today.

Data Conversion

None

User Story: IPOS Kidney – Eligibility Criteria

Eligibility Decision Diagram



User Story: IPOS Kidney – Eligibility Criteria

Additional Details

Matching configuration changes	No
Schema change	No
Data conversion	No
Audit	Yes
Dependencies	Yes: <ul style="list-style-type: none"> • Pre-Emptive data capture exists • cPRA cut-off configuration for Pre-Emptive
Translation	Yes
Permission changes	No
Report changes	No
Impacted areas	Recipient Registration / Activation

Translation

English	French
Patient must be On Dialysis or Pre-Emptive	